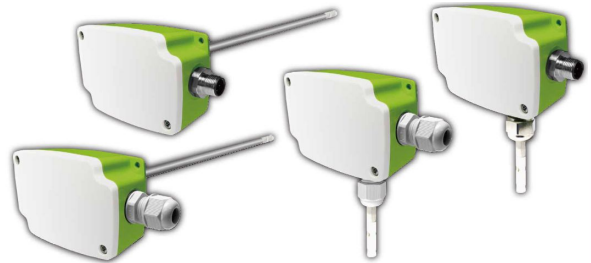


DMTHE110/120

Rel. Feuchte & Temperatur Sensor [rel. humidity & temperature Transducer]

- Messbereich: 0-100%rF & 0 bis +50°C
[range: 0-100%rH & 0 to +50°C]
- OEM Ausführung
[OEM version]
- Wand- oder Kanalmontage
[wall or duct mount]
- Analogausgänge: 0-10 V, 4-20mA
[analog outputs: 0-10 V, 4-20mA]
- Genauigkeit: ±5%rF & ±0,5°C
[accuracies: ±5%rF & ±0,5°C]
- Marke: eYc
[brand: eYc]

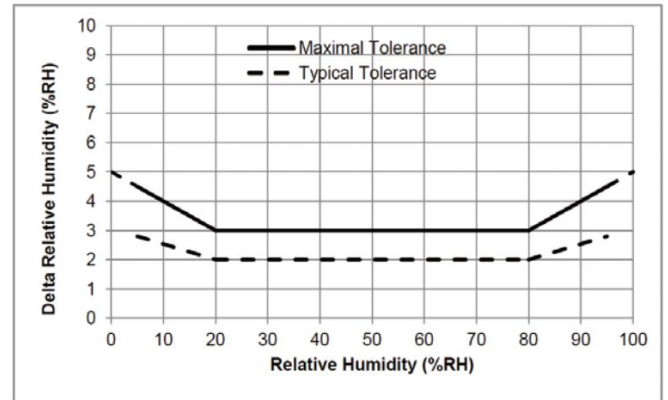
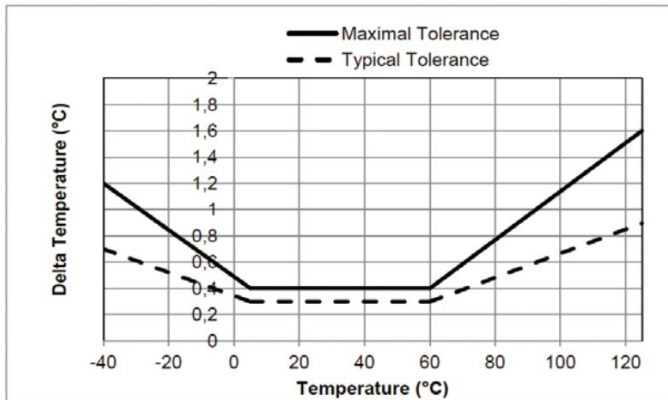


Spezifikationen [specifications]

Messbereiche-Feuchte [ranges-humidity]	CMOS Sensor [CMOS sensor] 0 – 100%rF [rH] Nicht-kondensierend [non-condensing]
Messbereich-Temperatur [range-temperature]	0 - +50°C
Genauigkeit Temperatur [Accuracy temperature]	±0,5°C
Genauigkeit Feuchte [Accuracy humidity]	30 – 80% rF [rH]: ±5%rF [rH]
Hysterese [hysteresis]	1%rF [rH]
Drift	Temp: 0,04°C/Jahr [°C/year] Feuchte [humidity]: 0,5%rF/Jahr [%rH/year]
Temperatureinfluss [temperature influence] 0 – 80°C	Max 0,15%rF/°C [rH/°C]
Versorgungsspannung [supply voltage]	2-Leiter [2 wire]: 15-35 VDC 3-Leiter [3 wire]: 19-35VDC & 24±10%VAC
Stromaufnahme [power consumption]	2-Leiter [2 wire]: max. 45 mA 3-Leiter [3 wire]: DC: max 80mA AC: max 150mA
Lastwiderstand [Load resistor]	mA: < 250 Ω V: >10 kΩ
Ausgangssignal [output signal]	0-10V (3-Leiter [3 wire]) 4-20mA (2-Leiter [2 wire])
Aufwärmzeit [warm up time]	<2 Minuten [minutes] Stabil [stable] in 20 min
Schutzart [protection rating]	IP54
Elektrischer Schutz [electrical protection]	Verpolungsschutz [polarity protection] Überspannungsschutz [over voltage protection] Kurzschlusschutz [short circuit protection]
Messmedium [media measured]	Umgebungsluft [ambient air]
Feuchtebereich [working humidity]	0 – 100%rF nichtkondensierend [rH, non-cond.]
Betriebstemperatur - Gehäuse [operating temperature - housing]	0°C+50°C

Betriebstemperatur – Sensor [operating temperature – probe]	0°C+100°C
Lagertemperatur [storage temperature]	-20°C.....+60°C
Gewicht [weight]	DMTHE110: 120 g DMTHE120: 135 g

Sensor accuracy measuring list



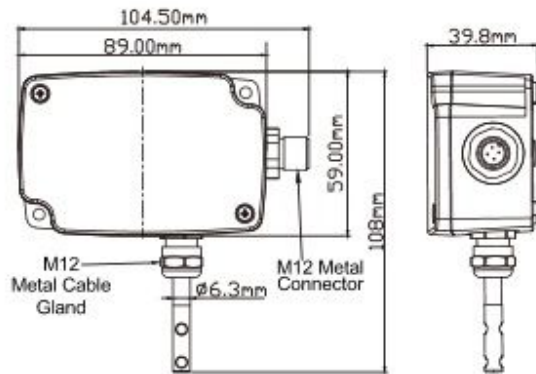
Bestellinformationen [ordering information]

Item	DMTHE	110	-	A	6	3	-	30	XX	-	N
Installation	Indoor Duct	110 120									
Function	Temp. / Humidity output		-	A							
Output	4 ...20mA (2-wire) 0 ... 10V (3-wire)				1 6						
Power Supply	15 ... 35 VDC (2-wire) 19 ... 35 VDC & 24 ± 10%VAC (3-wire)					1 3					
Range	0 ... + 50 °C 0 ... + 80 °C 0 ... + 100 °C Special span						-	30 38 40 YY			
Passive T-sensor	None								XX		
Option	Plastic cable gland Metal connector									-	N M

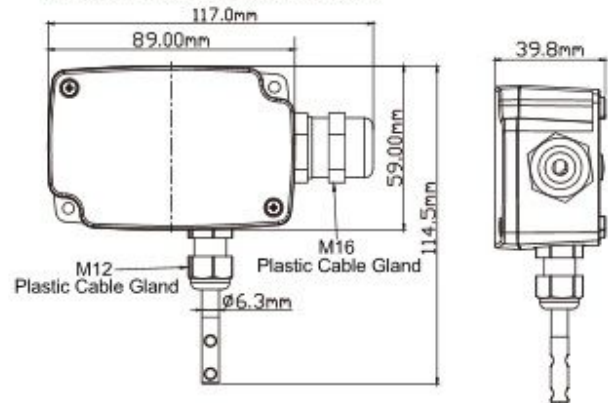
Abmessungen [dimensions]

DMTHE110

1.M12 Metal Cable Gland+ M12 Metal Connector

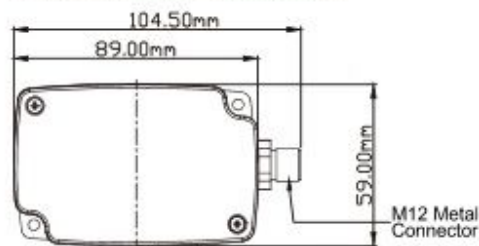


2.M12 Plastic Cable Gland+ M16 Plastic Cable Gland



DMTHE120

1.M12 Metal Connector



2.M16 Plastic Cable Gland

